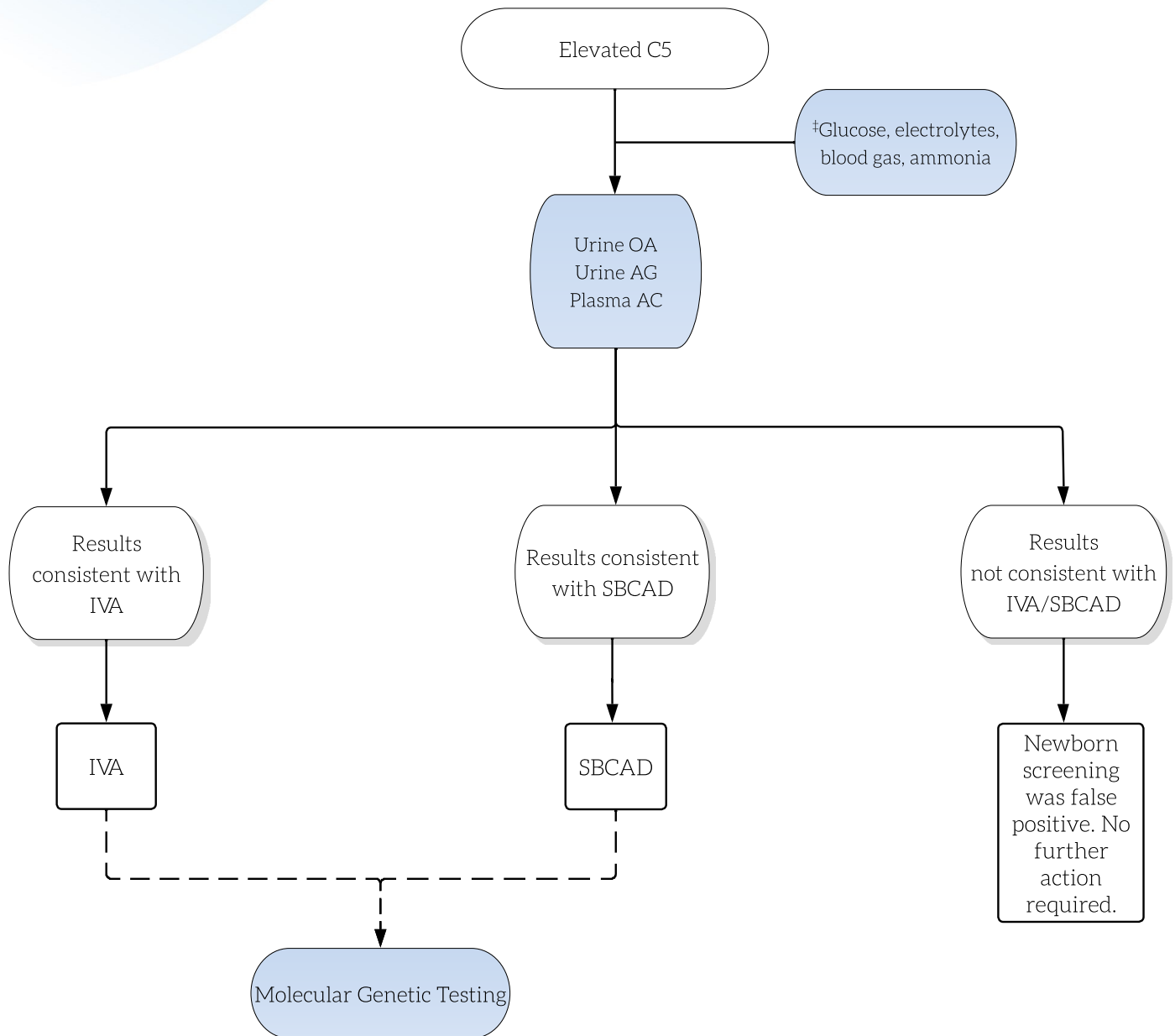


Isovaleric Acidemia: Increased C5 (isolated)



Key

- Actions are shown in shaded ovals; results are in the unshaded ovals. Diagnostic outcomes in boxes.
- ‡May be performed locally as a rapid screen to assess severity.

Abbreviations

AC = acylcarnitines
 AG = acylglycines
 IVA = isovaleric acidemia
 OA = organic acids
 SBCAD = short/branched chain acyl-CoA dehydrogenase deficiency