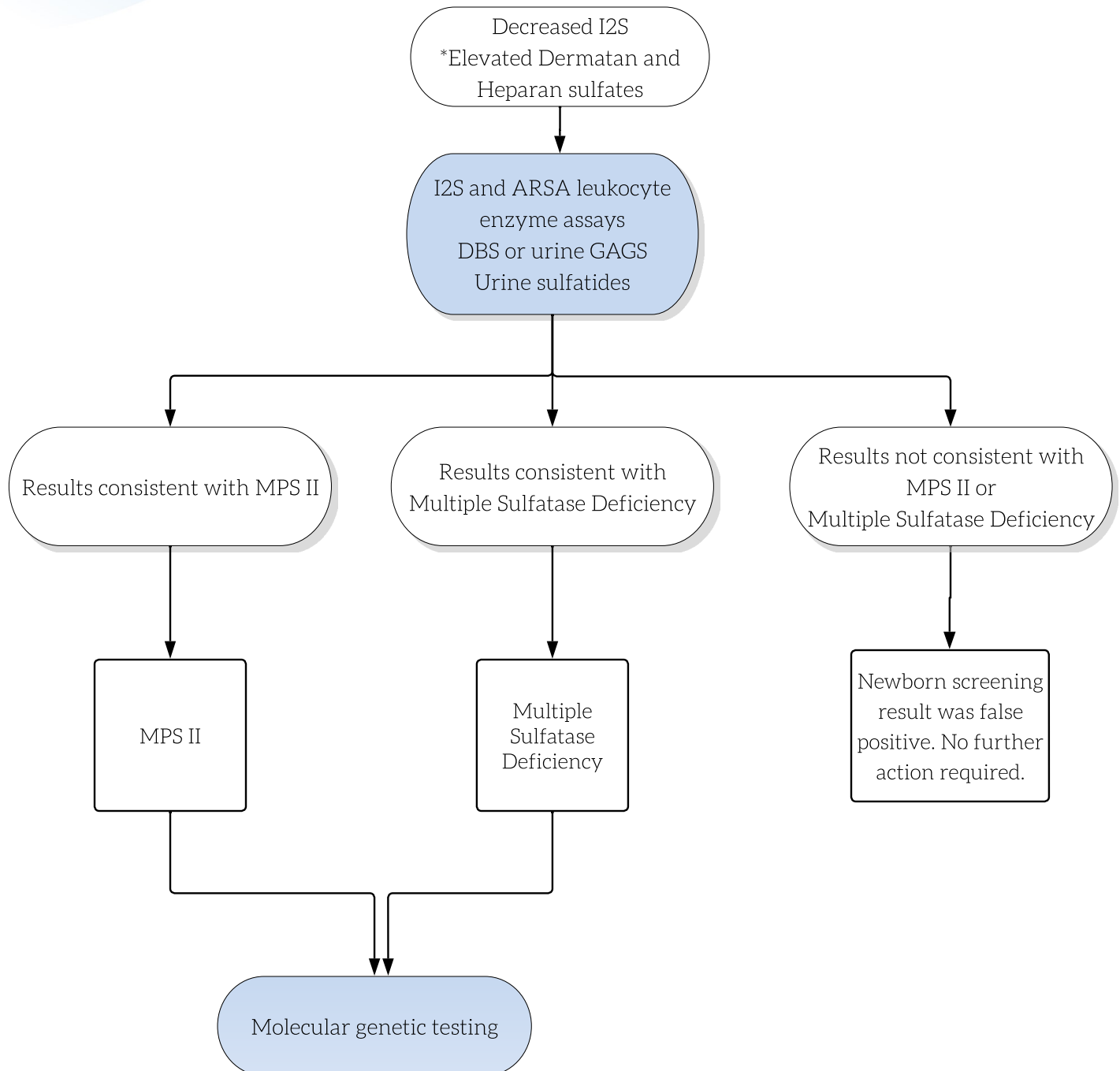


Mucopolysaccharidosis Type II (MPS II): Decreased Iduronate 2-Sulfatase (I2S) activity



Key

- Actions are shown in shaded ovals; results are in the unshaded ovals. Diagnostic outcomes are shown in boxes.
- Dashed line reflects an optional test.
- *GAGS may be a second tier test.

Abbreviations:

- ARSA = Arylsulfatase enzyme assay
- DBS = dried blood spots
- GAGS = Glycosaminoglycans
- I2S = Iduronate 2-Sulfatase