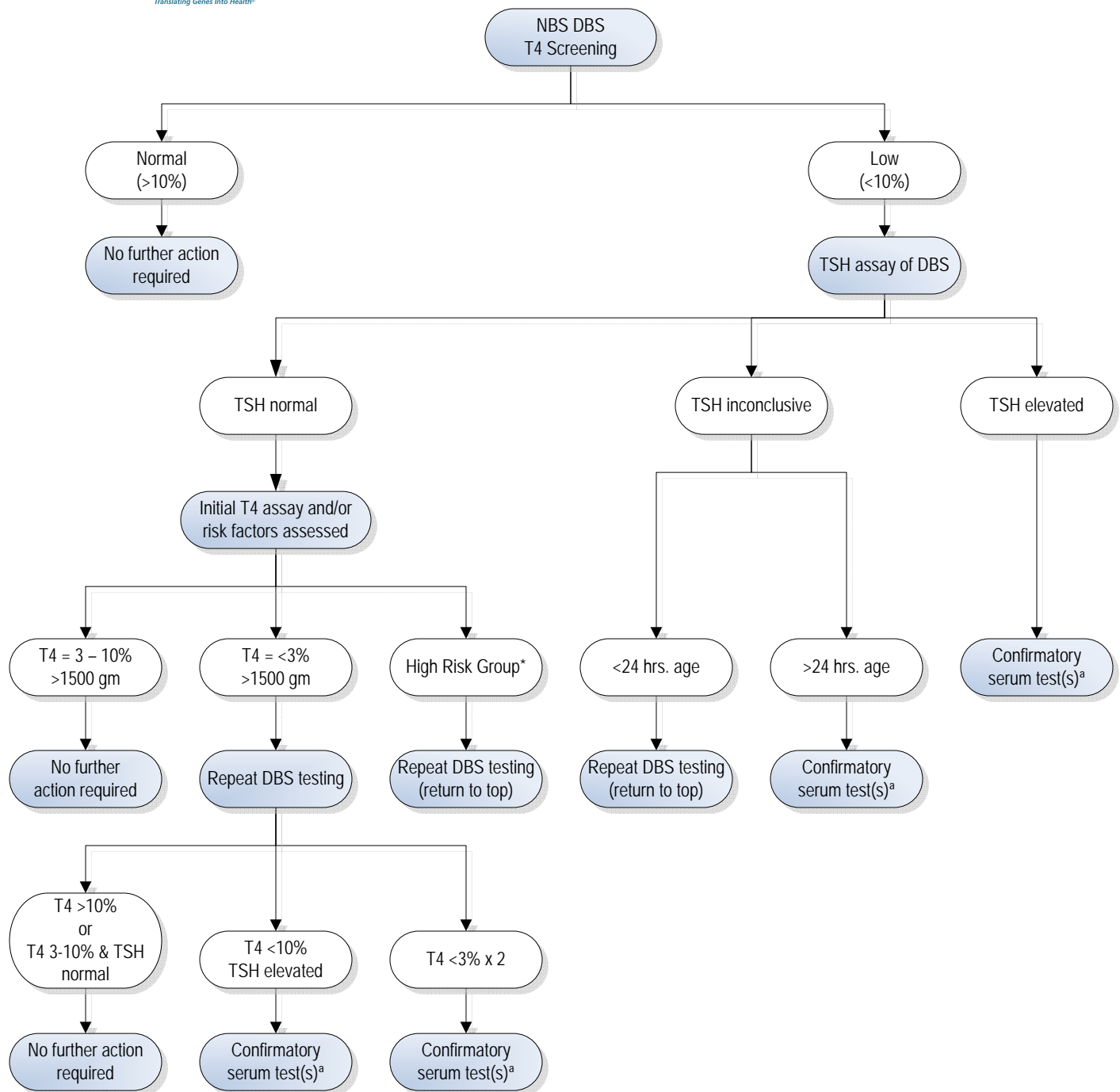


Congenital Hypothyroidism (T4)



Actions are shown in shaded boxes, while results are in the unshaded boxes.

Abbreviations/Key

NBS = Newborn screening
 DBS = Dried Blood Spot
 T4 = Thyroxine or total thyroxine
 TSH = Thyroid Stimulating Hormone
 CHD = Congenital Heart Disease

* High risk group

<1500 gm
 NICU admission
 Same-sex twin
 Transfusion
 CHD/other severe congenital anomaly
 Drugs: dopamine, steroids, iodine

^aConfirmatory Serum Tests

Free T4 [or] T4 and T3 resin uptake (T3RU)
 TSH

Disclaimer: This guideline is designed primarily as an educational resource for clinicians to help them provide quality medical care. It should not be considered inclusive of all proper procedures and tests or exclusive of other procedures and tests that are reasonably directed to obtaining the same results. Adherence to this guideline does not necessarily ensure a successful medical outcome. In determining the propriety of any specific procedure or test, the clinician should apply his or her own professional judgment to the specific clinical circumstances presented by the individual patient or specimen. Clinicians are encouraged to document the reasons for the use of a particular procedure or test, whether or not it is in conformance with this guideline. Clinicians also are advised to take notice of the date this guideline was adopted, and to consider other medical and scientific information that become available after that date.