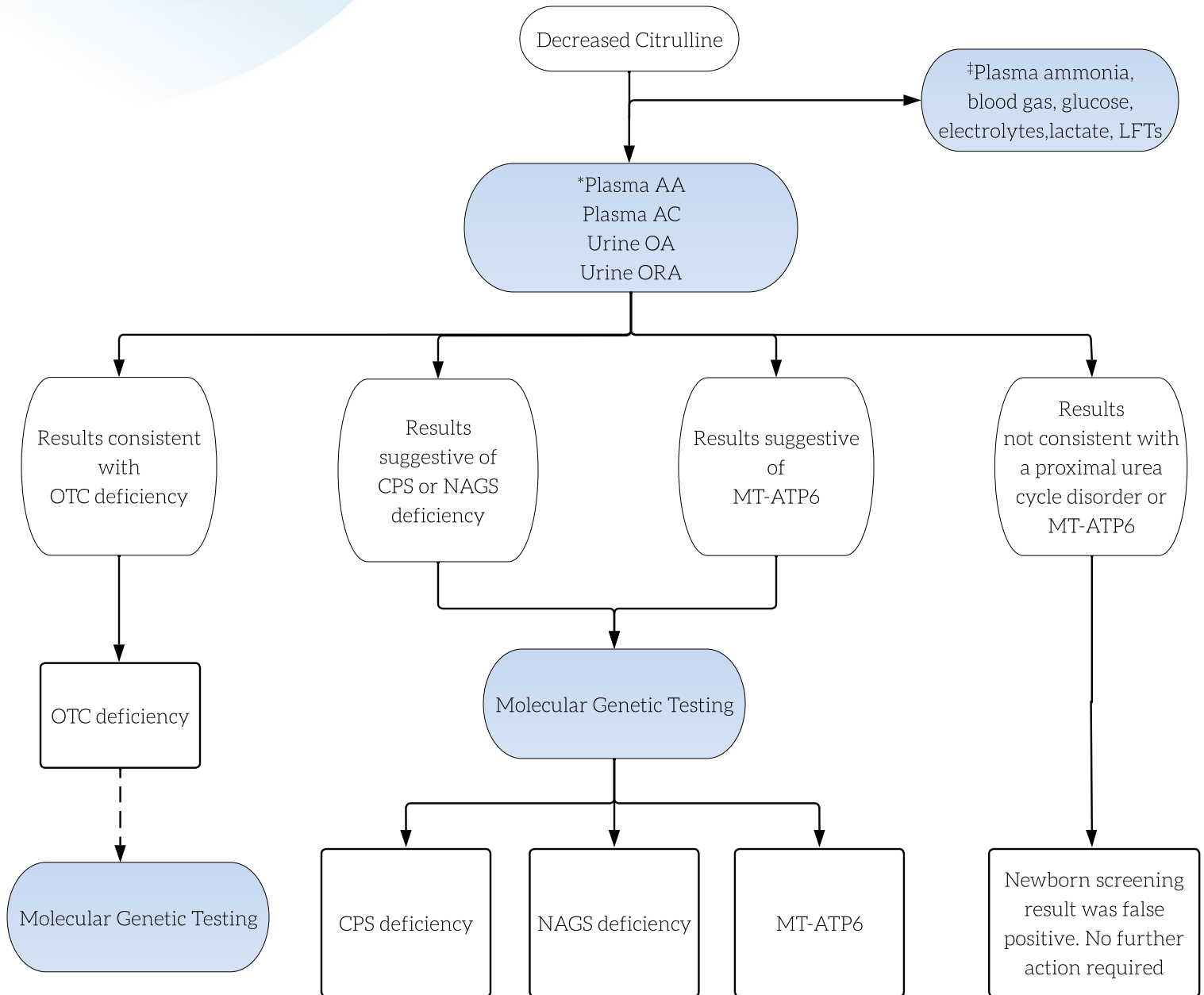


Decreased Citrulline



Key

- Actions are shown in shaded ovals; results are in the unshaded ovals. Diagnostic outcomes are shown in boxes.
- Dashed line reflects an optional test.
- ‡May be performed locally as a rapid screen to assess severity.
- *Urine organic acids (orotic acid) may be informative.

Abbreviations

- AA = amino acids
- AC = acylcarnitines
- CPS = carbamoyl phosphate synthetase
- LFTs = liver function tests
- MT-ATP6 = mitochondrially encoded ATP synthase membrane subunit 6 disease
- NAGS = N-acetylglutamate synthetase
- OA = organic acids
- ORA = orotic acids
- OTC = ornithine transcarbamylase